

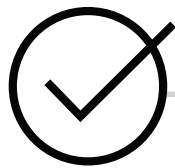
# HIRERIGHT & LUMESSE

## INTEGRATION WORKFLOW

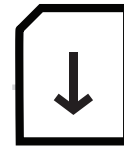
Recruiter identifies candidate



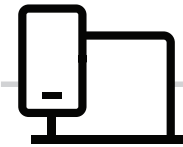
Recruiter initiates background check in Lumesse



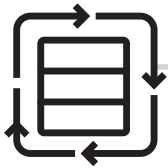
Lumesse transfers request and candidate data to HireRight



HireRight sends invite to candidate to provide authorization review the information and complete missing information



HireRight processes request based on client requirements



Status is posted back to Lumesse so recruiter may review progress of background check



A link with access to the completed background check results is posted to Lumesse



Recruiter views results by going to HireRight link

